

SWISSCO SWIFT

45M ANCHOR HANDLING TUG

GENERAL DATA

Length:	45 m
Breadth:	11 m
Depth / Draft:	4 m / 3.4m
GRT / NRT:	499 / 149 tons
Registry:	Singapore
Built:	2010
Official Number:	395898
Call Sign:	9V8515
IMO Number:	9550450
Classification:	Bureau Veritas
Bollard Pull:	41 tons



MAIN ENGINE / GENERATOR

Main Engine:	2 x Caterpillar 3512 B @ 1750 bhp
Main Generator:	2 x Caterpillar 3406C 415V/268kVA/215 kW/50Hz
Bow Thruster:	HRP 3001 TT – 220 kW – 3 tons
Propulsion:	2 x FPP in Kort Nozzle
Gearbox:	Renjist WAF 763L
Max Speed:	12 knots
Consumption:	Approx. 12,509ltrs/24hrs @ 8knots Approx 1,500ltrs/24hrs @ standby

DECK EQUIPMENT

AH / Towing Winch:	Waterfall double drum - ME50 THATTW 50 tons Brakeholding: 120T
Tugger Winch:	2 x 5 tons @ 15m / min
Anchor Windlass:	3.3 tons – twin gypsy/warping drum
Anchor:	Stockless Anchor - 900 kg
Stern Roller:	SWL 150 tons; 3.5m x 1.5m
Wire Rope:	Work: 40 mm x 150 m Tow: 40 mm x 600 m
Sharpjaw / Towpin:	100 tons SWL
Crane:	2 tons @ 6m

OTHER INFORMATION

Deck Space:	20.3 m x 8.3 m = 168.49 m ²
Deck Strength:	5T/m ²
Deck Capacity:	140T

ACCOMODATION

Single Cabin:	2 units
Twin Cabin:	3 units
4 Men Cabin:	3 units
Total:	20 men

NAVIGATION / COMMUNICATION EQUIPMENT

Radar:	JRC JMA-5212-6HS
Echo Sounder:	JRC FF60
GPS:	JRC J-Nav 500
AIS:	JRC JHS-182
Auto Pilot:	Comnav - 2001
Compass:	Ruian CGT-165 – Magnetic Ruian CGT-130 - Steering
Sat Phone/ Fax/ Email:	+870773183789 Swisscoswift@SkyFile.com
Inmarsat C:	JRC JUE-85
SSB:	JRC JSB-196GM
VHF:	2 x JRC NCM -1770
Navtex:	JRC NCR-333
EPIRB:	McMurdo
SART:	2 x McMurdo-S4
PA System:	Fitted
Search Lights:	2 units fitted
Speed Log:	JRC JLN 205
Walkie Talkie:	2 x RTP 1000

TANK CAPACITY

Fuel Oil:	277.89 m ³
Lube Oil:	2.91 m ³
Fresh Water:	154.43 m ³
Ballast Tank:	87.4 m ³
Foam:	5.23 m ³
Detergent:	6.3 m ³
FO Cargo Pump:	Desmi 580-70-220N/A09 -1- 50 m ³ /hr
FW Cargo Pump:	Desmi 580-70-220N/A09 -1- 50 m ³ /hr
Flow Meter:	1 unit fitted. Both ways

SAFETY EQUIPMENT

Fire Fighting:	1500 m ³ /hr with 2 monitors
Engine Room:	CO ² flooding system
Life Raft:	2 x 20 men self-inflatable

Last updated on: 3 Nov 2014

Particulars given herein are without warranty as to accuracy and interest parties must satisfy themselves by inspection or other means of details of the vessel.

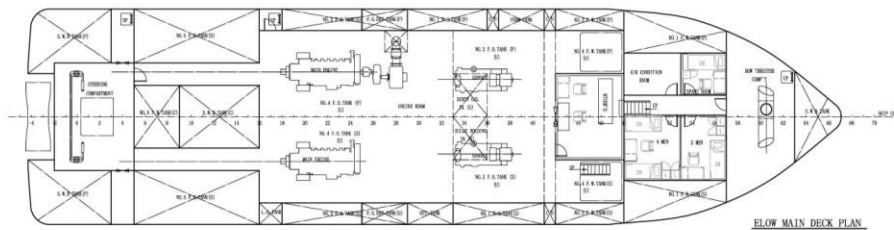
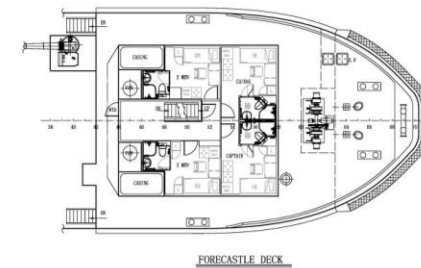
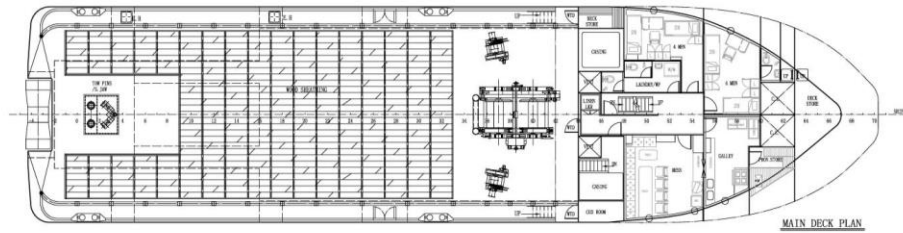
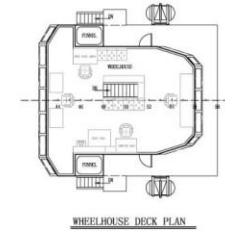
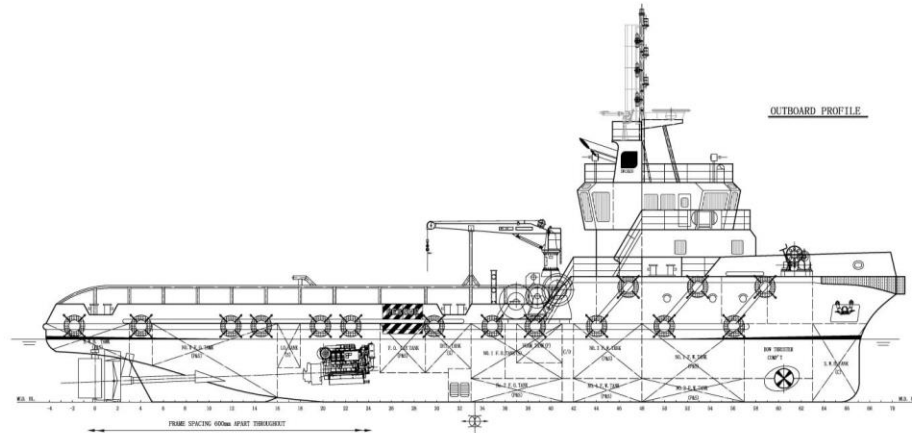


SWISSCO OFFSHORE PTE LTD

60 Penjuru Lane, Singapore 609214 | Tel: (65) 6265 2855 Fax: (65) 6264 1661
E-mail: swissco@singnet.com.sg | Website: www.swissco.net

GENERAL ARRANGEMENT

SWISSCO SWIFT



PRINCIPAL DIMENSIONS

LENGTH OVERALL	45.00 M
LENGTH WATERLINE	42.75 M
LENGTH B. P.	40.00 M
BREADTH MOULDED	11.00 M
DEPTH MOULDED	4.00 M
DESIGN DRAFT MOULDED	3.20 M
FUEL OIL	280 M ³ (app.)
FRESH WATER	154 M ³ (app.)
CLEAR DECK AREA	210 M ²
MAIN ENGINE	2 x 1750 BHP
SPEED (TRIALS)	12.0 kn
BOLLARD PULL	40 T
COMPLEMENT	20 MEN



SWISSCO OFFSHORE PTE LTD

60 Penjuru Lane, Singapore 609214 | Tel: (65) 6265 2855 Fax: (65) 6264 1661

E-mail: swissco@singnet.com.sg | Website: www.swissco.net

SWISSCO