

SWISSCO SUPPLIER

55M ANCHOR HANDLING TUG

GENERAL DATA

Flag:	Indonesia
Built:	2008
Official Number:	2011 Ba No. 2135/L
Call Sign:	PNTP
IMO Number:	9397078
Length:	55.00 m
Breadth:	13.80 m
Depth / Draft:	5.50 m / 4.30 m
Classification:	Bureau Veritas
GRT / NRT:	1123 / 337 tons

MAIN ENGINE / GENERATOR

Main Engine:	2 x Caterpillar 3516B 2100 bhp @ 1600 rpm
Main Generator:	3 x Caterpillar 3406C 50 Hz/415V/245KW
Bow Thruster:	5 tons - controllable pitch type
Gear Box:	2 x Reintjes WAF 763
Propulsion:	Fixed pitch Propeller
Emergency Genset:	1 x 84kW
Max Speed:	12 knots
Consumption:	16,500 ltrs / 24hrs @ 80% MCR (approx.)

DECK EQUIPMENT

AH / Towing Winch:	Double Drum type – 75 tons @ 1 st layer
Tugger Winch:	2 x 5 tons @ 15m / min
Anchor Windlass:	Hydraulic Windlass, 36 mm dia., 54.1 kN
Anchor:	AC - 14 HHP Anchor , 2 x 1109kg
Stern Roller:	1.5 m x 4.5 m, SWL 200 tons
Wire Rope:	Work wire: 150 m x 52 mm Tow wire: 600 m x 52 mm
Capstan:	2 x 5 tons @ 15 m / min
Sharkjaw / Towpin:	200 tons SWL
Crane:	2 tons SWL @ 6 m

SAFETY EQUIPMENT

Fire Fighting:	2 x 600m ³ / hr monitors with fire curtain
Engine Room:	CO ² flooding system
Life Raft:	6 x 15 men self-inflatable
Life Jackets:	37
Fireman Outfit:	2



NAVIGATION / COMMUNICATION EQUIPMENT

Radar:	2 x JRC - 48 nm / 96 nm
Echo Sounder:	Furuno FE 700
AIS:	JRC, JHS-182
GPS:	JRC, JNAV 50
Auto Pilot:	JRC, Comnav
Compass:	Yokogawa gyro compass Sakura magnetic compass
Inmarsat C:	JRC, JUE – 85
SSB:	JRC, JSB-196 GM
VHF:	JRC, JHS-32B
Navtex:	NCR333
EPIRB:	2 x McMurdo E3
SART:	JQX-30A
Search Light:	2 units – 2000W
PA System:	1 unit – Fitted
Speed Log:	JRC

TANK CAPACITY

Fuel Oil:	427.9 m ³
Fresh Water:	504.3 m ³
Lube Oil:	3.4 m ³
Hydraulic Oil:	10.9 m ³
Sewage Tank:	8.4 m ³
Mud Tank:	142.5 m ³
Cement Tank:	113.2 m ³
Ballast Tank:	180 m ³

ACCOMMODATION

Single Cabin:	2 units
Twin Cabin:	4 units
4 Men Cabin:	5 units
Total:	30 men

OTHER INFORMATION

Deck Space:	29 m x 11.4 m = 330.6 m ²
Deck Strength:	5 tons / m ²
Bollard Pull:	55 tons

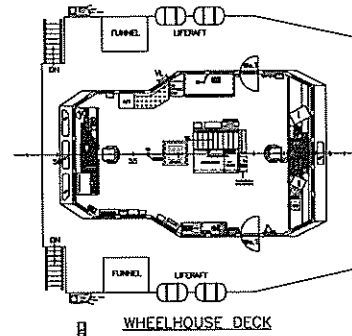
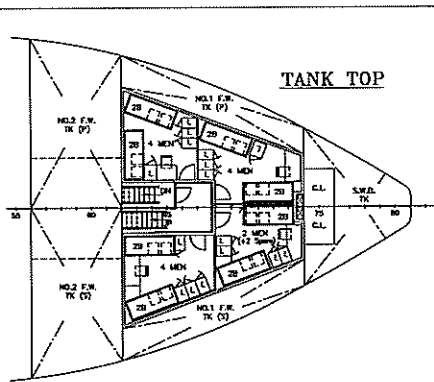
Particulars given herein are without warranty as to accuracy and interest parties must satisfy themselves by inspection or other means of details of the vessel.



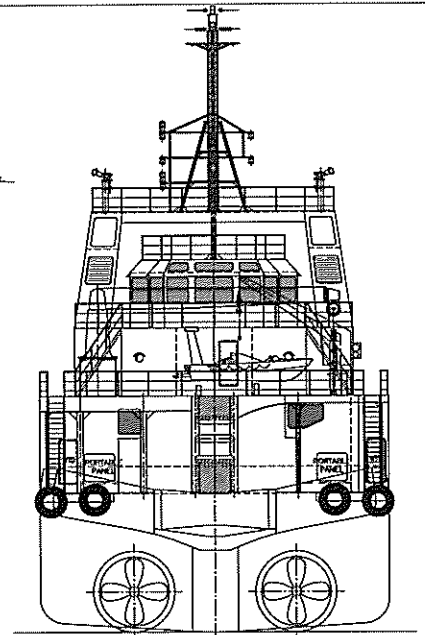
PT. SWISSINDO MARINE

Arthaloka Building, 12th Floor, 1203B | Jl. Jend. Sudirman Kav. 2 | Jakarta 10220 - Indonesia
Tel: (62-21) 57939158-59-60 Fax: (62-21) 57939161

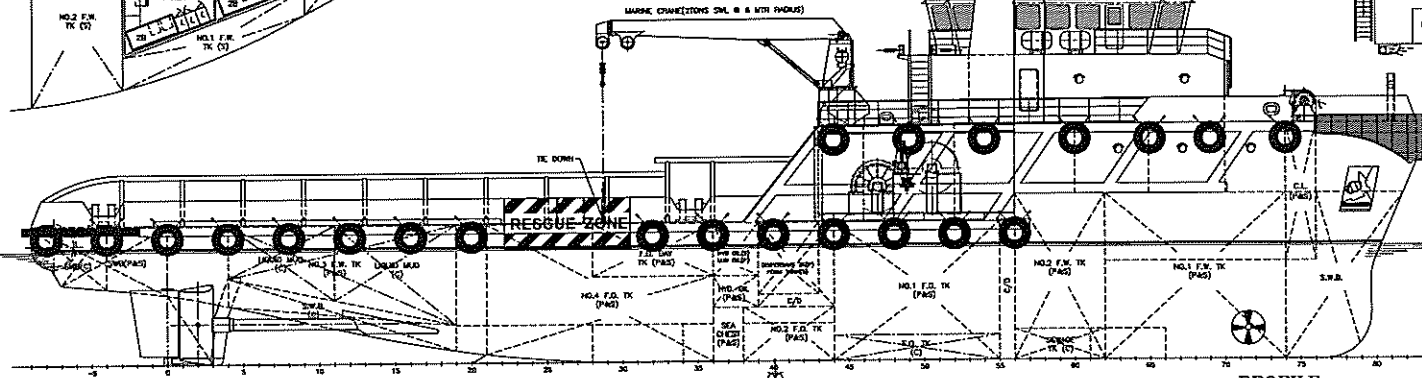
TANK TOP



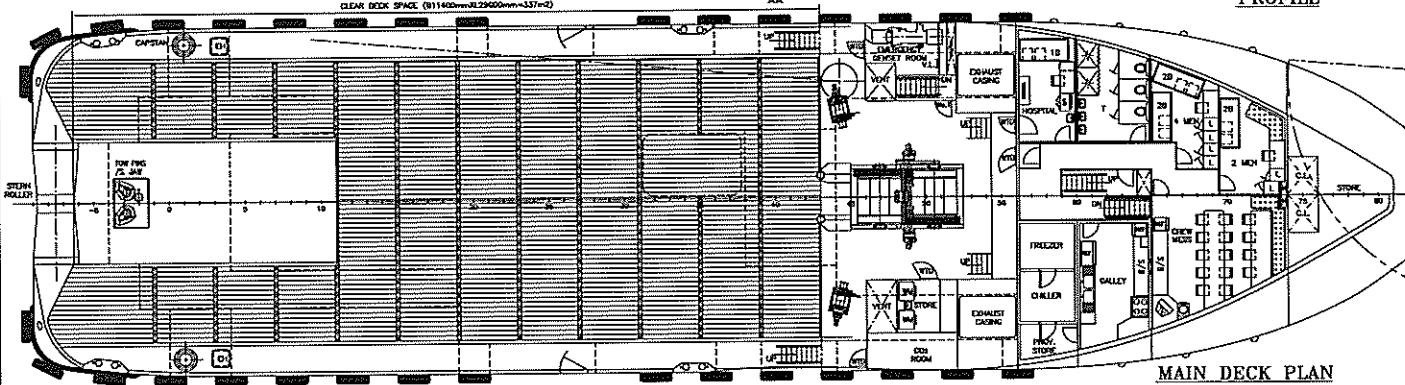
WHEELHOUSE DECK



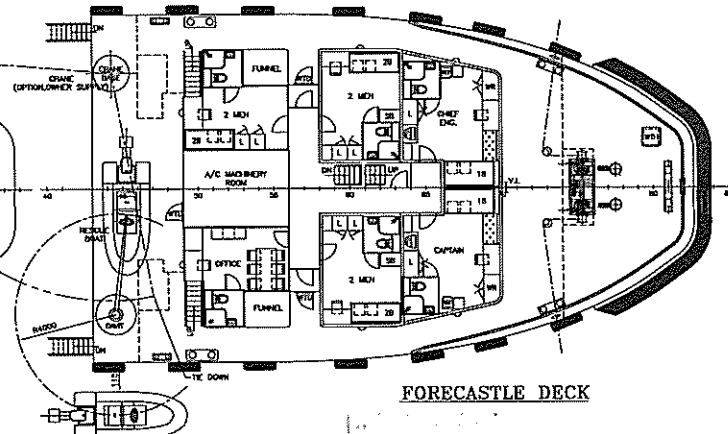
STERN VIEW



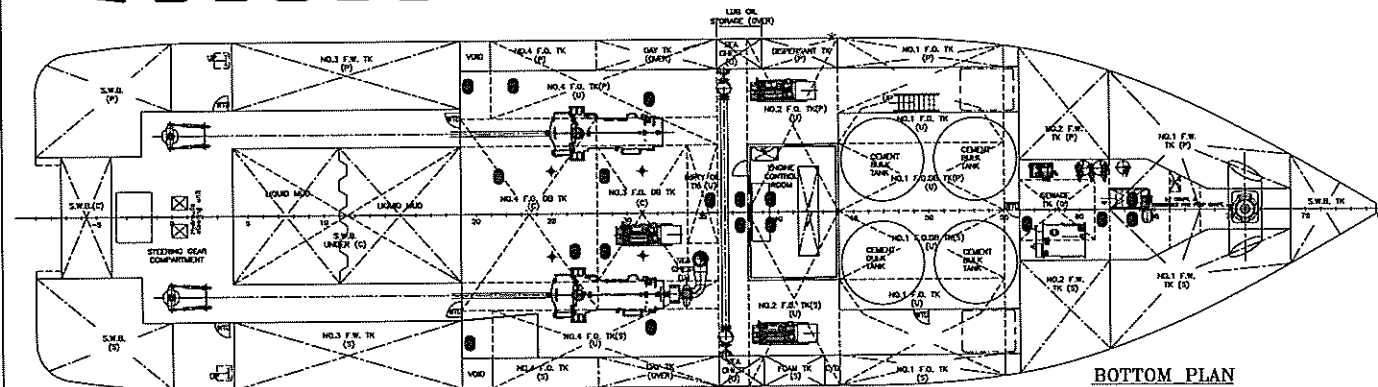
PROFILE



MAIN DECK PLAN



FORECASTLE DECK



BOTTOM PLAN

PRINCIPAL PARTICULARS

LENGTH OA	55.00m
LENGTH WL	53.50m
BEAM MLD	13.80m
DEPTH MLD	5.50m
DRAFT DESIGNED/MAX	4.30m/4.76m
COMPLEMENT	26+2 MEN
F.O.	419.5m ³
F.W.	494.2m ³
S.W.B.	165.7m ³
FOAM	11.6m ³
DETERGENT	11.6m ³
DRY BULK	113.2m ³
LIQUID MUO	134.5m ³
CLEAR DECK SPACE	337m ²

THIS DRAWING AND THE INFORMATION CONTAINED HEREON ARE SUPPLIED ON THE UNDERSTANDING THAT THEY ARE THE EXCLUSIVE PROPERTY OF CORNHOLD & ASSOCIATES. THEY MUST NOT BE USED OR REPRODUCED IN WHOLE OR IN PART WITHOUT PERMISSION IN WRITING.

SHIP:	55m A.H. TUG/SUPPLY VESSEL
TITLE:	GENERAL ARRANGEMENT
OWNER:	SHANGHAI SHIPYARD
CLASS:	BY RINA L. APPROVE SUPPLY VESSEL
YARD NO. LIST:	



SWISSCO SUPPLIER