

# SWISSCO SEAL

## 26M CREW BOAT

### GENERAL DATA

<b>Length:</b>	26.00m
<b>Breadth:</b>	6.70 m
<b>Depth:</b>	3.00 m (approx.)
<b>GRT / NRT:</b>	115 / 34 tons
<b>Registry:</b>	Panama
<b>Built:</b>	2009
<b>Official Number:</b>	38895 –PEXT-1
<b>Call Sign:</b>	HP7448
<b>IMO Number:</b>	9558438
<b>Classification:</b>	Bureau Veritas



### MAIN ENGINE / GENERATOR

<b>Main Engine:</b>	2 x Caterpillar C18 715 bhp @ 2100 rpm
<b>Gear Box:</b>	2 x Twin Disc MQX 5135A
<b>Main Generator:</b>	2 x Yanmar 4 TNE 106-G1A 400V/115V/40 kVA/45.3kW/50Hz
<b>Bow Thruster:</b>	Scandia 40 hp
<b>Propulsion:</b>	2 x Fixed Pitch Propeller
<b>Max Speed:</b>	18.5 knots
<b>Consumption:</b>	5,790 ltrs / 24 hrs @ 80% MCR (approx.)

### ACCOMMODATION

<b>Passengers:</b>	36 personnel + 8 crew capacity
<b>Crew Facility:</b>	4 x 2 berth 1 x Gallery / Dinette / Bathroom 1 x Store
<b>Air Conditioning:</b>	Passenger Areas, Crew Cabin & Wheel House

### OTHER INFORMATION

<b>Deck Space:</b>	8.85 m x 4.85 m = 42.92 m <sup>2</sup>
<b>Deck Strength:</b>	1.5 tons / m <sup>2</sup>
<b>Sewage System:</b>	CK Tec CKST – 150
<b>Oily Water System:</b>	Village Marine Tec, OWS-2.2

### NAVIGATION / COMMUNICATION EQUIPMENT

<b>Radar:</b>	Furuno - 32nm range
<b>Echo Sounder:</b>	Nakano Fuso FEC - 609
<b>GPS:</b>	Furuno GP - 32
<b>EPRIB:</b>	Fitted
<b>Compass:</b>	Ritchie power damp magnetic - 125nm
<b>Sat Phone / Fax /</b>	+870764912496
<b>Email:</b>	Swisscoseal@SkyFile.com
<b>Radio:</b>	1 x HF / SSB Icom IC – M710 2 x VHF / Icom IC – M504 2 x VHF Portable McMurdo R1
<b>Navtex:</b>	1 unit – McMurdo NAV - 7
<b>PA System:</b>	Hanshin HPA 7300s
<b>SART:</b>	McMurdo S4
<b>Search Lights:</b>	1 unit - Fitted
<b>Wind Direction:</b>	1 unit – YOUNG Wind Tracker
<b>Horn:</b>	1 unit - Fitted

### SAFETY EQUIPMENT

<b>Life Raft:</b>	2 x 50 men
<b>Engine Room:</b>	CO <sup>2</sup> flooding system
<b>Portable Fire</b>	Yanmar YDP 20E
<b>Pump:</b>	

### TANK CAPACITY

<b>Fuel Oil:</b>	15,000 ltrs
<b>Fresh Water:</b>	5,000 ltrs

Last updated on: 26 November 2010

Particulars given herein are without warranty as to accuracy and interest parties must satisfy themselves by inspection or other means of details of the vessel.



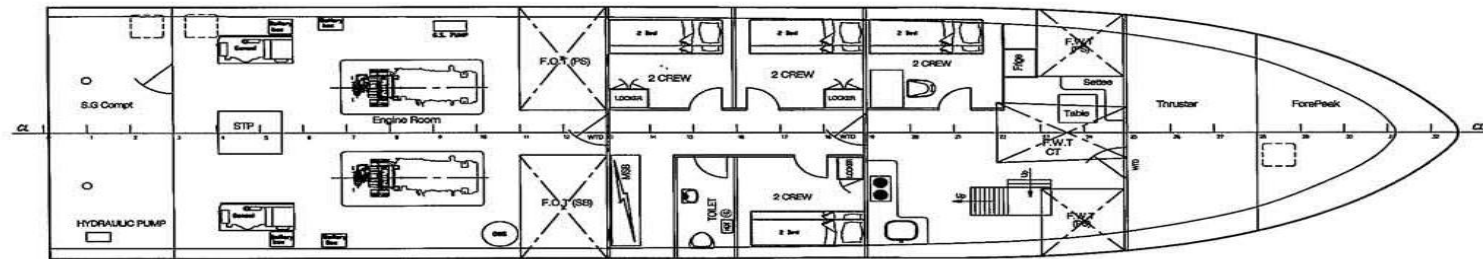
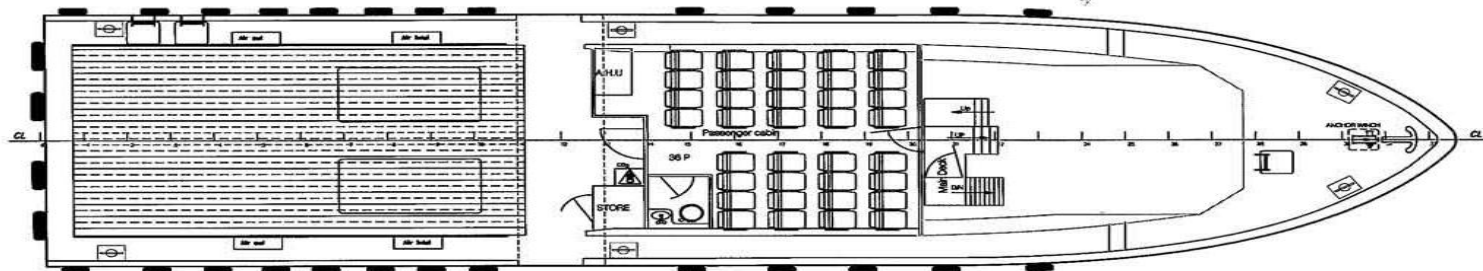
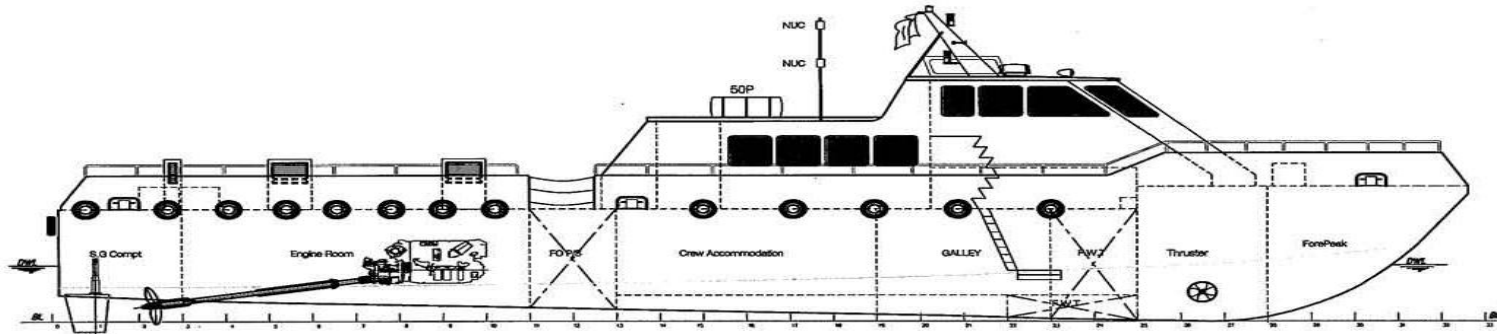
**SWISSCO OFFSHORE PTE LTD**

60 Penjuru Lane, Singapore 609214 | Tel: (65) 6265 2855 Fax: (65) 6264 1661  
E-mail: swissco@singnet.com.sg | Website: www.swissco.net

SWISSCO

# GENERAL ARRANGEMENT

## SWISSCO SEAL



**SWISSCO OFFSHORE PTE LTD**

60 Penjuru Lane, Singapore 609214 | Tel: (65) 6265 2855 Fax: (65) 6264 1661  
E-mail: [swissco@singnet.com.sg](mailto:swissco@singnet.com.sg) | Website: [www.swissco.net](http://www.swissco.net)

SWISSCO