

SWISSCO PANTHER

36M CREW / UTILITY BOAT

GENERAL DATA

Length Overall :	36m
Breadth:	7.6m
Depth / Max Draft:	3.65m/2.36m
GRT / NRT:	249/152 tons
Registry:	Panama
Built:	2015
IMO:	9717931
Call Sign:	HP4743
Registration Number:	46730-PEXT
Classification:	ABS A1, HSC+AMS

MAIN ENGINE / GENERATOR

Main Engine:	3 x Cummins KTA 38-M2 1350bhp @ 1900 rpm
Main Generator:	2 x Cummins 80 MXDG @ 91kW//415v/50Hz
Gear Box:	3 x Twin Disc MGX6690SC
Bow Thruster:	1 x 1 ton Thrustmaster
Propulsion:	3 x FPP bronze alloy propellers
Speed:	25 knots @ 100% MCR 23 knots @ 85% MCR

ACCOMMODATION

Passenger Seating:	70 Personnel (reclining type)
Area:	2 x toilet
1-man cabin:	2 units
2-men cabin:	4 units
Total:	10 crews
Toilet/Shower:	1 unit
Crew Facility:	1 x Galley/Mess/Store
Air Conditioning:	Central type for all passenger/ Crew/ Bridge area

OTHER INFORMATION

Deck Space:	94m ²
Deck Strength:	2 tons / m ²
Deck Cargo:	50 tons
Rescue Boat:	1x 6 men type with 25hp outboard
Sewage Treatment:	Fitted
Oily Water Plant:	Fitted



NAVIGATION / COMMUNICATION EQUIPMENT

Radar:	1 x Furuno FR-8062 1 x MFD 12
Echo Sounder:	1 x Furuno CV-620
GPS:	1 x GP-32 GPS
Auto Pilot:	1 x Robertson AP35
Compass:	1 x Robertson RGC50 Gyro 1 x Saura Magnetic
Inmarsat C:	Sailor 6110
SSB:	1 x Furuno FS-1570
AIS:	Sailor 6280
VHF:	Sailor 6222
MH/HF Radio:	Sailor 6310 150W Class A
Navtex:	Sailor 6391
EPIRB:	1 x McMurdo E5
SART:	1 x McMurdo S5
PA System:	Fitted
Navigation Lights:	Aqua Signal
Search Lights:	1 x Francis 1000 watts

SAFETY EQUIPMENT

Life Rafts:	For 70 + 10 personnel
Fire/Heat Detection:	Fitted
H2S Detection:	Fitted
External FiFi:	600 m ³ /hr with 2 monitors
CO2 System:	Fitted in Engine Room
Dispersant System:	Fitted with 500 ltrs tank

TANK CAPACITY

Fuel Oil:	57.4 m ³ (approx.)
Fresh Water:	21.25 m ³ (approx.)
Lube Oil:	2.3 m ³

Last updated on 17th March 2015

Particulars given herein are without warranty as to accuracy and interest parties must satisfy themselves by inspection or other means of details of the vessel.



SWISSCO OFFSHORE PTE LTD

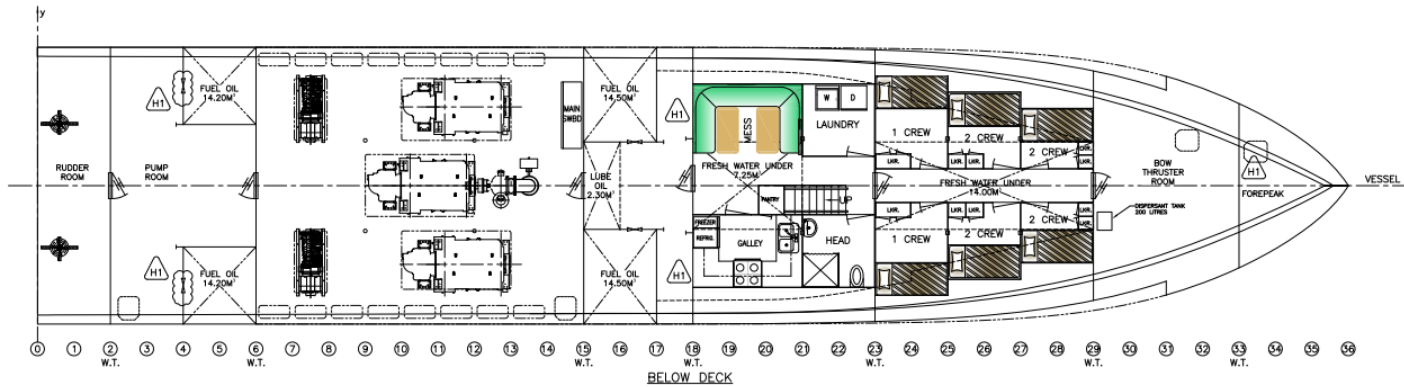
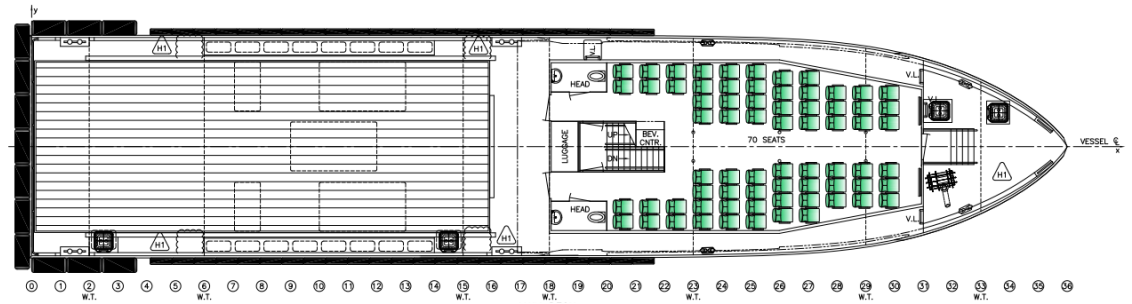
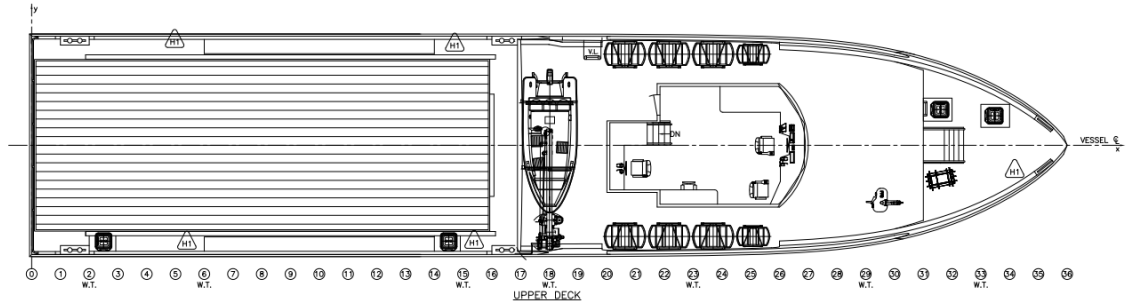
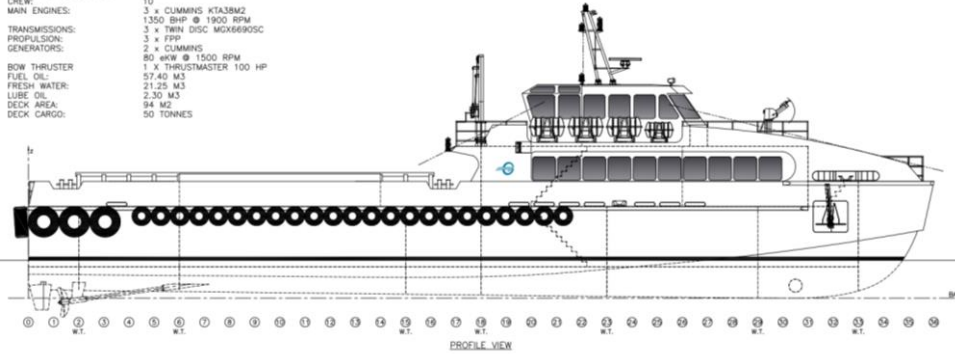
60 Penjuru Lane, Singapore 609214 | Tel: (65) 6265 2855 Fax: (65) 6264 1661
E-mail: swissco@singnet.com.sg | Website: www.swissco.net

SWISSCO

GENERAL ARRANGEMENT

SWISSCO PANTHER

INDUSTRIAL PERSONNEL: 70
 CREW: 10
 MAIN ENGINES: 3 x CUMMINS KTA38M2
 1350 BHP @ 1900 RPM
 TRANSMISSIONS: 3 x TWIN DISC MGX6690SC
 PROPULSION: 3 x FPP
 GENERATORS: 2 x CUMMINS
 80 kW @ 1500 RPM
 BOW THRUSTER: 1 x THRUSTMASTER 100 HP
 FUEL OIL: 57.40 M3
 FRESH WATER: 21.25 M3
 LUBE OIL: 2.30 M3
 DECK AREA: 94 M2
 DECK CARGO: 50 TONNES



SWISSCO OFFSHORE PTE LTD

60 Penjuru Lane, Singapore 609214 | Tel: (65) 6265 2855 Fax: (65) 6264 1661

E-mail: swissco@singnet.com.sg | Website: www.swissco.net