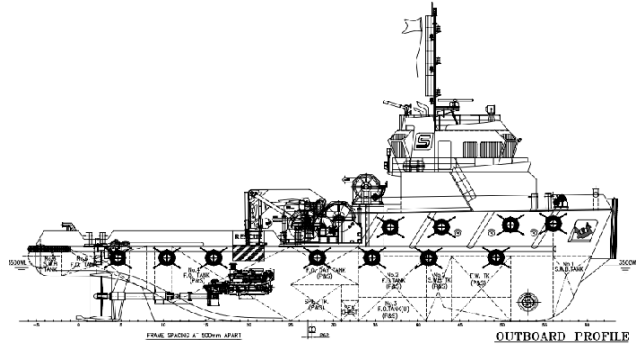


SWISSCO GARNET

34M ANCHOR HANDLING TUG

GENERAL DATA

Length Overall :	34m
Breadth:	10m
Depth / Draft:	4.70m / 3.50m
GRT / NRT:	393/118 (Approx.)
Registry:	Singapore
Built:	Delivery Oct 2014
Official Number:	TBA
IMO:	TBA
Call Sign:	TBA
Classification:	Bureau Veritas
Bollard Pull:	40T (Approx.)



MAIN ENGINE / GENERATOR

Main Engine:	2 x Cummins KTA50-M2 1600 BHP @1800 rpm
Main Generator:	2 x Cummins China 136Kw/50Hz/415V
Gearbox:	REINTJES, WAF675
Propulsion:	2 x FPP with Nozzle, Ratio 1:7:476
Bow Thruster:	1 x 3T Kawasaki
Max Speed:	11 knots
Consumption:	TBA

DECK EQUIPMENT

AH/Towing Winch:	1 x40T Electro Hydraulic single drum, Brake Holding 80T @ 1 st layer Marine Equipment
Anchor:	2 x stockless anchor with Grade U2 Stud-Link-Chain Cables
Anchor Windlass:	Electro Hydraulic; 3T@12m/min
Tugger Winch:	5T @10m/min
Sharkjaw/Towpin:	100T SWL Smith Berger Type
Deck Crane:	120T Knuckle Boom Type Max outreach 17.6m Iron fist 4.9T@17m
Stern Roller:	Fitted
Storage Drum:	700m x 38mm Hydraulic type

SAFETY EQUIPMENT

External Fire Fighting:	1200m ³ /hr with 2 monitor
Emergency Fire Pump:	Diesel driven, 20m ³ /hr @ 25m
Engine Room:	CO ² Flooding System
Life Jacket:	20 pax
Life Raft:	2 x 20 men, SOLAS standard
Life Buoy:	8 sets, SOLAS standard

NAVIGATION / COMMUNICATION EQUIPMENT

Radar:	JRC JMA 2344; 64 & 48NM
GPS:	JRC GPS 112
AIS:	Fitted
Auto Pilot:	COMNAV 2001RFC
Magnetic Compass:	SAURA MR150
VHF:	JRC JHS-32B
MF/ HF:	JRC JSB 196GM
Echo Sounder:	JRC FF50
EPIRB:	JRC JQE-3A
SART:	ACR 9GHz
Speed Log:	JRC, IMO standard
PA System:	Phonetech SPA 1500
Search Lights:	2 x 1000kW

TANK CAPACITY

Fresh Water:	53.5m ³
Fuel Oil:	316m ³
Lube Oil:	2m ³
Ballast/Bilge:	35m ³ /hr @ 30m
Fuel Oil Transfer:	50m ³ /hr @ 50m head
Fresh Water Cargo:	20m ³ /hr @ 20m head

ACCOMMODATION

Single Cabin:	2 units
2 men Cabin:	3 units
4 men Cabin:	2 units
Total:	16 men

OTHER INFORMATION

Clear Deck Space:	80.8m ²
Deck Strength:	5T/m ²
Hull Number:	Hull 111

Last updated on 14th July 2014

Particulars given herein are without warranty as to accuracy and interest parties must satisfy themselves by inspection or other means of details of the vessel.



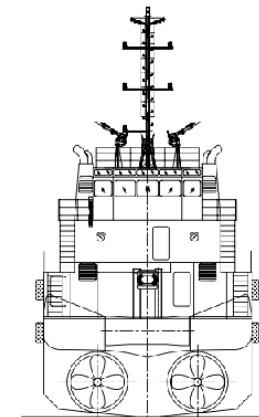
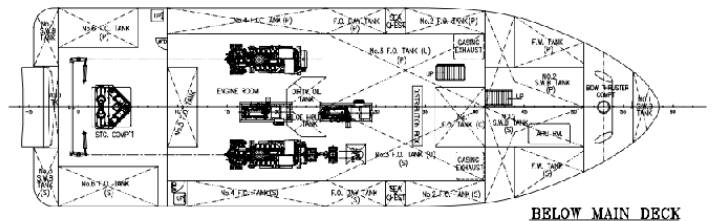
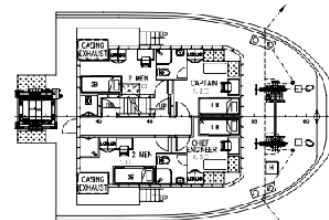
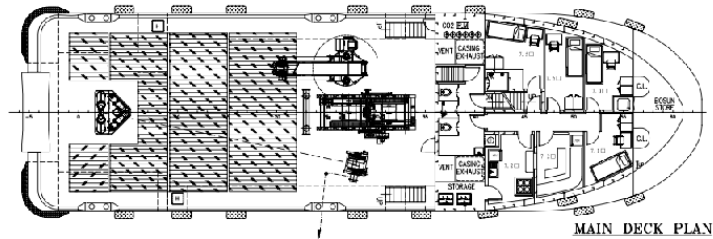
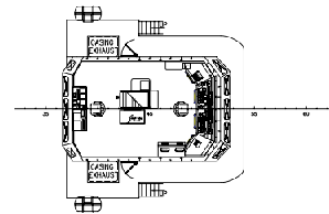
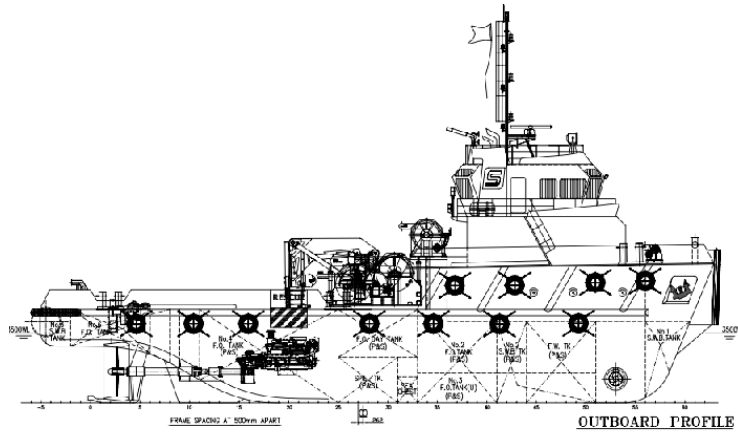
SWISSCO OFFSHORE PTE LTD

60 Penjuru Lane, Singapore 609214 | Tel: (65) 6265 2855 Fax: (65) 6264 1661
E-mail: swissco@singnet.com.sg | Website: www.swissco.net

SWISSCO

GENERAL ARRANGEMENT

SWISSCO GARNET



PRINCIPAL DIMENSIONS

LENGTH OVERALL	34.00 M
LENGTH WATERLINE	32.50 M
BREADTH MOULDED	10.00 M
DEPTH MOULDED	4.70 M
EXTREME DRAFT MOULDED	3.50 M
COMPLEMENT	14 MEN
TOTAL POWER	2 X 1600BHP @ 1800RPM
TRIAL SPEED	11.0 KNOTS
BOLLARD PULL (AHEAD)	40.0 TONNES
G.R.T.(APPROX)	~398(APPROX.)
N.R.T.(APPROX)	~133(APPROX.)
SERVICE	Unrestricted Service
CLASSIFICATION	BY 1+HULL+MACH TUG



SWISSCO OFFSHORE PTE LTD

60 Penjuru Lane, Singapore 609214 | Tel: (65) 6265 2855 Fax: (65) 6264 1661

E-mail: swissco@singnet.com.sg | Website: www.swissco.net

SWISSCO