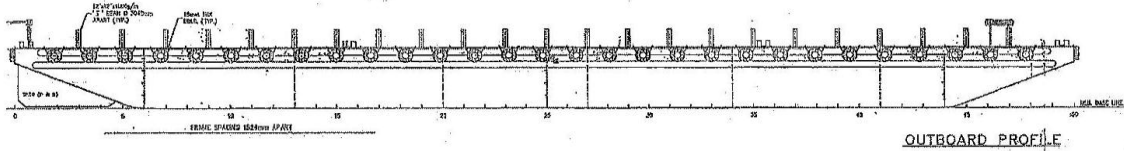
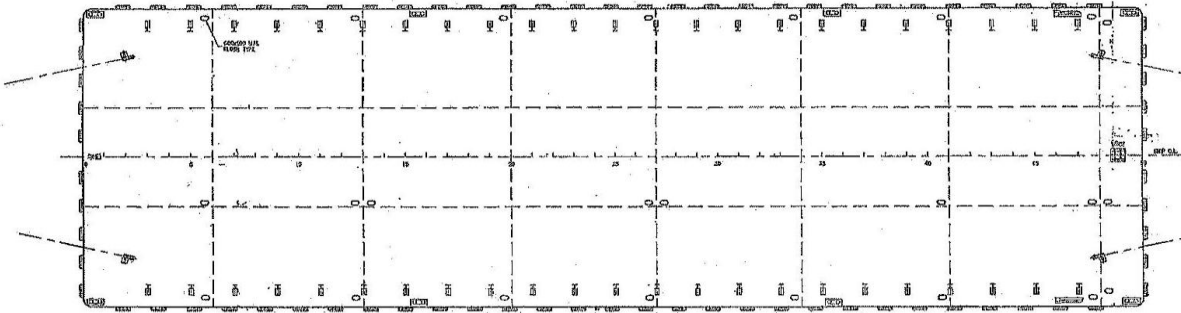


SWISSCO 55

250FT FLAT TOP CARGO BARGE



OUTBOARD PROFILE



MAIN DECK PLAN

GENERAL DATA

Registry	: Singapore
Built	: 2007
Official Number	: 392758
Length	: 250 ft (73.15 m)
Breath	: 80 ft (24.38 m)
Depth	: 16 ft (4.88 m)
Draft	: 3.8 m
Classification	: Bureau Veritas
GRT / NRT	: 2306 / 692 tons
Light Weight	: 1,100 tons (approx.)
Dead Weight	: 5,300 tons (approx.)

DECK EQUIPMENT

Deck Plate	: 16 mm
Side / Bottom Plate	: 12 mm
Deck Load	: 15 tons/m ²
Other Deck	: 6 double bits
Fitting	1 set Navigation Light stand 37 pcs Cargo Stanchions 4,572 mm apart from frame 2 to 37

Last updated on: 26 November 2010

Particulars given herein are without warranty as to accuracy and interest parties must satisfy themselves by inspection or other means of details of the vessel.



SWISSCO OFFSHORE PTE LTD

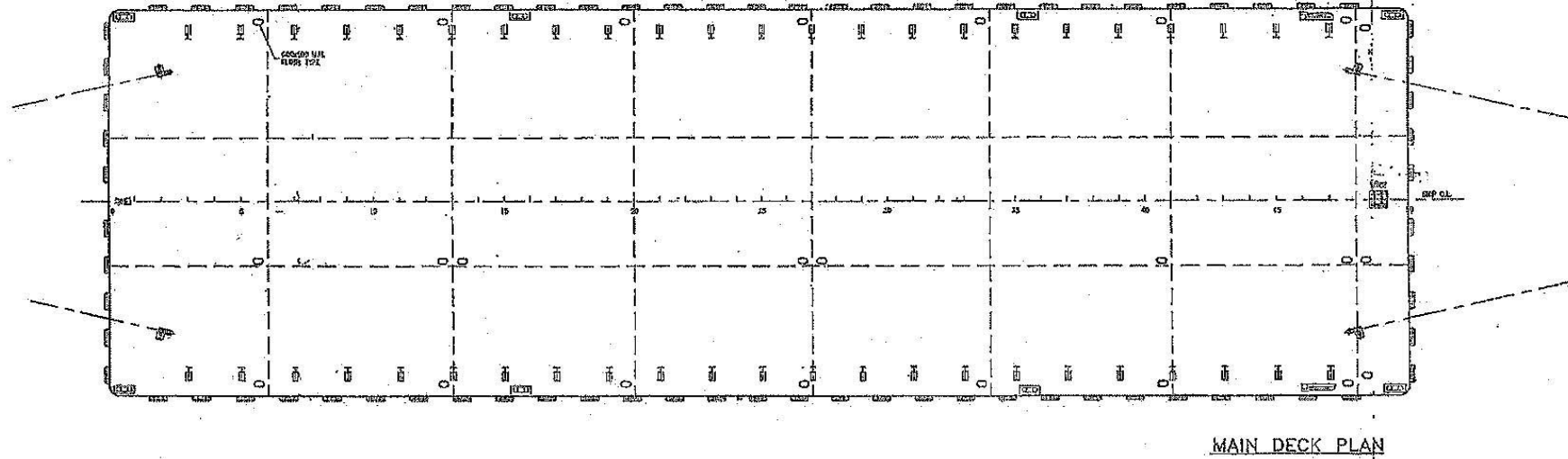
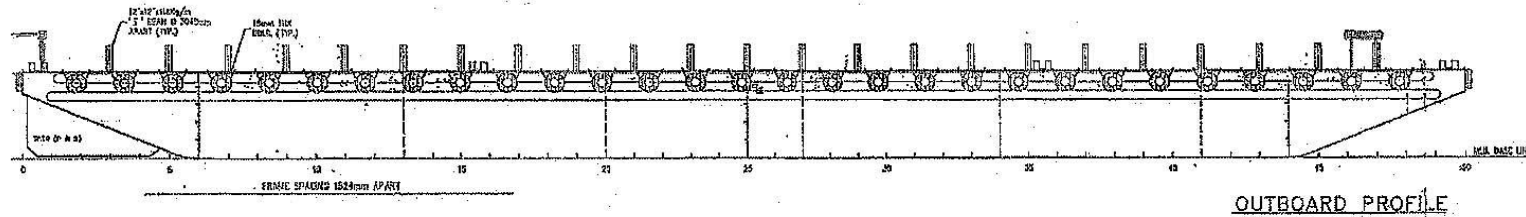
60 Penjuru Lane, Singapore 609214 | Tel: (65) 6265 2855 Fax: (65) 6264 1661

E-mail: swissco@singnet.com.sg | Website: www.swissco.net

SWISSCO

GENERAL ARRANGEMENT

SWISSCO 55



PRINCIPAL DIMENSIONS

LENGTH OVERALL	76.200 M (250'-0")
BREADTH MOULDED	24.384 M (80'-0")
DEPTH MOULDED	4.880 M (16'-0")
DRAFT MOULDED	3.800 M (12'-6")



SWISSCO OFFSHORE PTE LTD

60 Penjuru Lane, Singapore 609214 | Tel: (65) 6265 2855 Fax: (65) 6264 1661
E-mail: swissco@singnet.com.sg | Website: www.swissco.net

SWISSCO