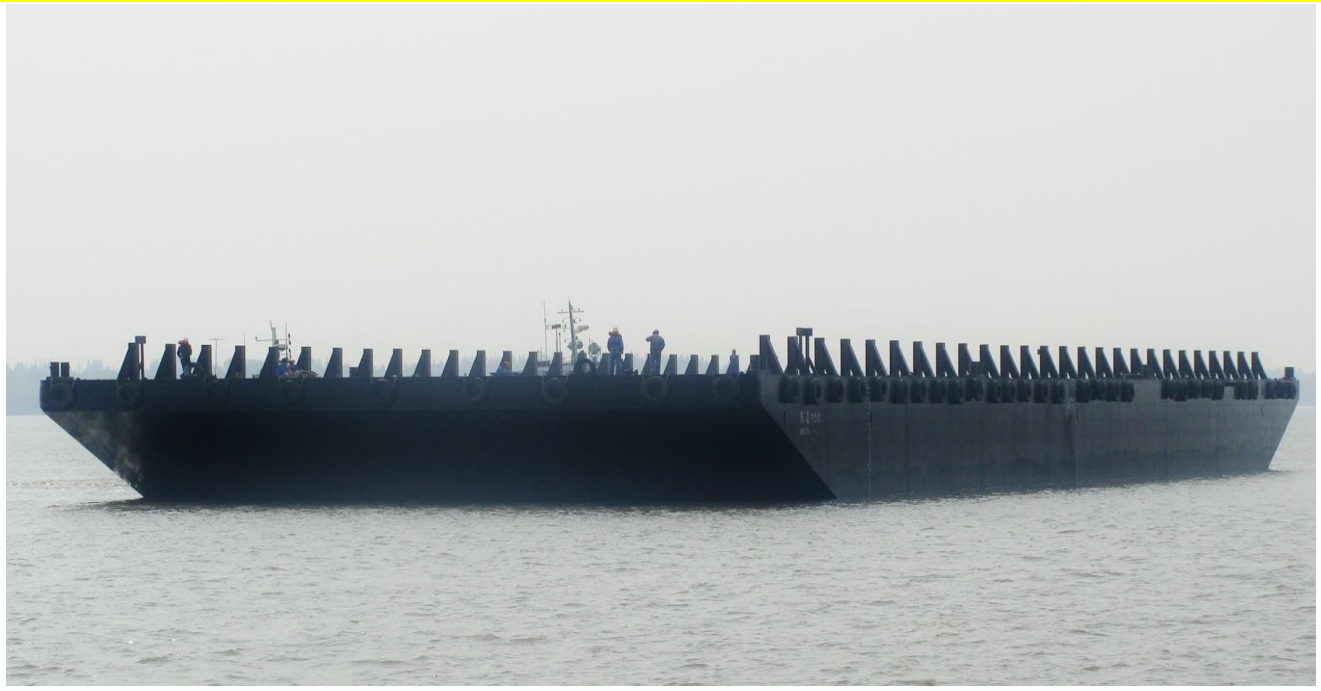


SWISSCO 282

282FT FLAT TOP CARGO BARGE



GENERAL DATA

Registry	: Singapore
Built	: 2013
Official Number	: 397876
Length	: 282 ft (85.954 m)
Breath	: 90 ft (27.432 m)
Depth	: 18 ft (5.500 m)
Draft	: 4.377 m
Classification	: Bureau Veritas
GRT / NRT	: 3,339 / 1,001 tonnes
Dead Weight	: 7,850 tons (approx.)

DECK EQUIPMENT

Deck Plate	: 18 mm
Side / Bottom Plate	: 14 mm
Deck Load	: 15 tons/m ²
Other Deck Fitting	: 1 set Navigation Light stand 48 pcs of 300 x 300 x 118 kg/m 'I' beam cargo stanchions @ 3048mm apart
Anchor Winch	: Hand operated of approx 10 tons capacity
Anchor	: 1000kg stockless bow anchor
Anchor Wire Rope	: 120m x 28mm

Last updated on: 6th March 2013

Particulars given herein are without warranty as to accuracy and interest parties must satisfy themselves by inspection or other means of details of the vessel.



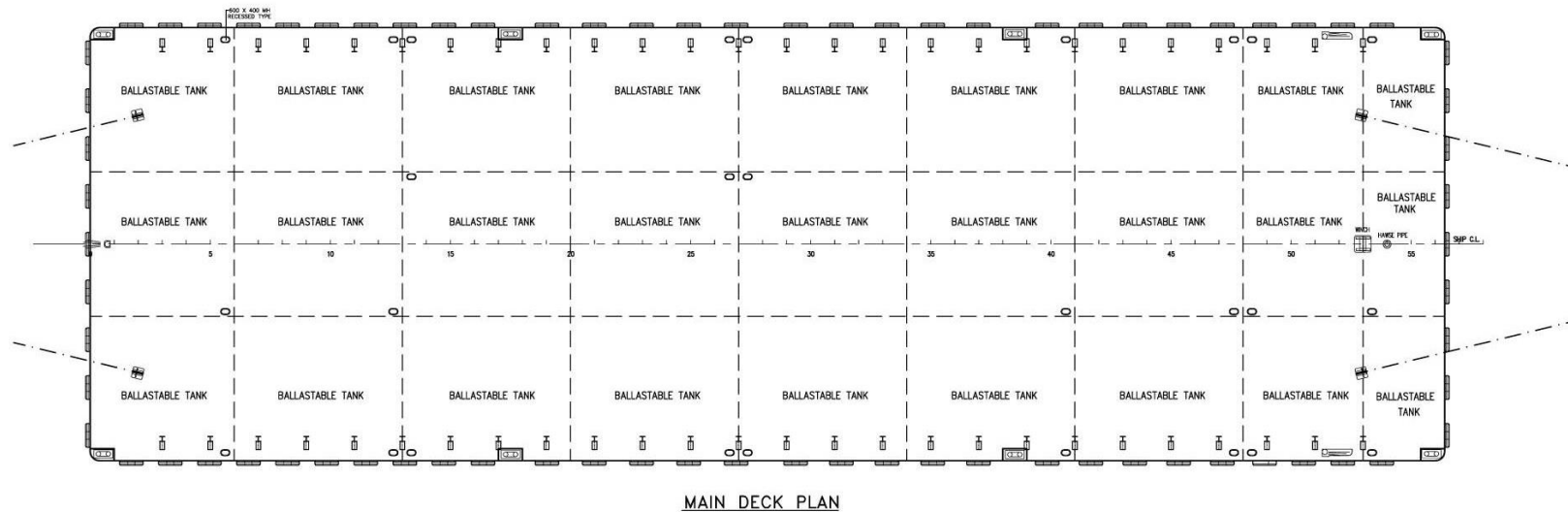
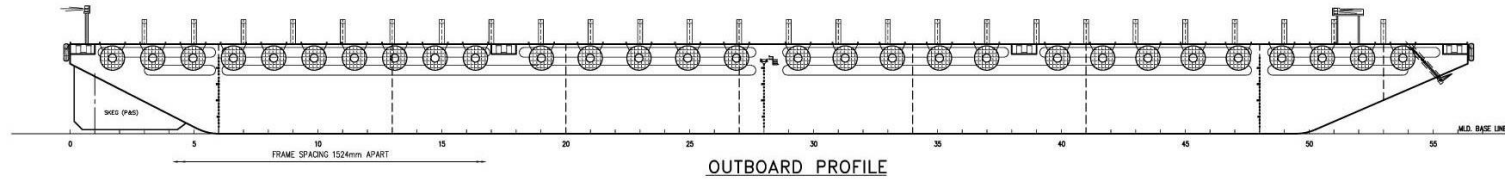
SWISSCO

SWISSCO OFFSHORE PTE LTD

60 Penjuru Lane, Singapore 609214 | Tel: (65) 6265 2855 Fax: (65) 6264 1661
E-mail: swissco@singnet.com.sg | Website: www.swissco.net

GENERAL ARRANGEMENT

SWISSCO 282



PRINCIPAL DIMENSIONS

LENGTH OVERALL	85.954 M (282'-0")
BREADTH MOULDED	27.432 M (90'-0")
DEPTH MOULDED	5.500 M (18'-0")
DRAFT MOULDED	4.377 M
DECK LOADING	15 MT/M ²



SWISSCO OFFSHORE PTE LTD

60 Penjuru Lane, Singapore 609214 | Tel: (65) 6265 2855 Fax: (65) 6264 1661
E-mail: swissco@singnet.com.sg | Website: www.swissco.net