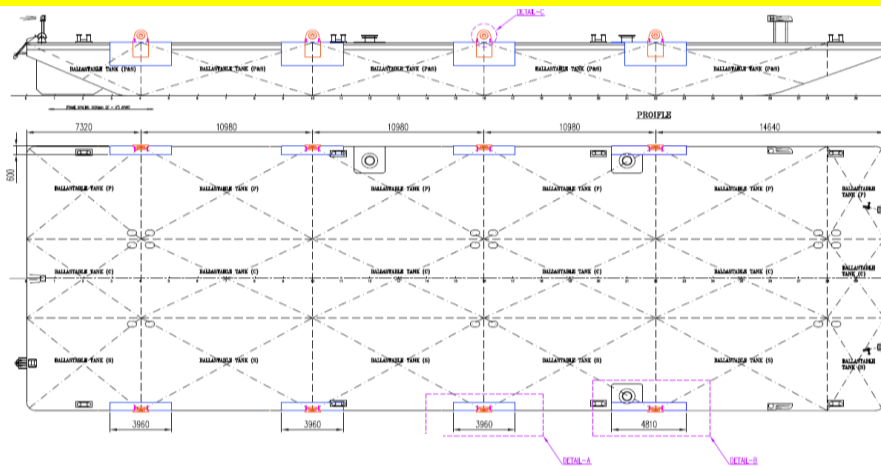


SMLOG 180

180FT SPUD BARGE / 2,000T TEST LIFT BARGE



GENERAL DATA

| | |
|------------------------|--------------------|
| Registry | : Singapore |
| Built | : 2012 |
| Official Number | : 397877 |
| Length | : 180 ft (54.9 m) |
| Breath | : 60ft (18.3 m) |
| Depth | : 12 ft (3.66 m) |
| Draft | : 2.93 m |
| Classification | : Bureau Veritas |
| GRT / NRT | : 901 / 270 tonnes |
| Light Weight | : 459.73T |
| Dead Weight | : 2,209T |

DECK EQUIPMENT

| | |
|----------------------------|--------------------------------------------------|
| Deck Plate | : 14 mm |
| Side / Bottom Plate | : 9 mm / 10 mm |
| Deck Load | : 10 tons/m ² |
| Other Deck Fitting | : Stanchions |
| | : 1 x 1000kg stockless bow anchor |
| | : 8 x 300mm mooring bollards |
| | : 2 towing brackets |
| | : 3 legged Spuds dia. 600mm |
| Other Information | : Internal tanks are fully welded for ballasting |

Last updated on: 16th April 2013

Particulars given herein are without warranty as to accuracy and interest parties must satisfy themselves by inspection or other means of details of the vessel.

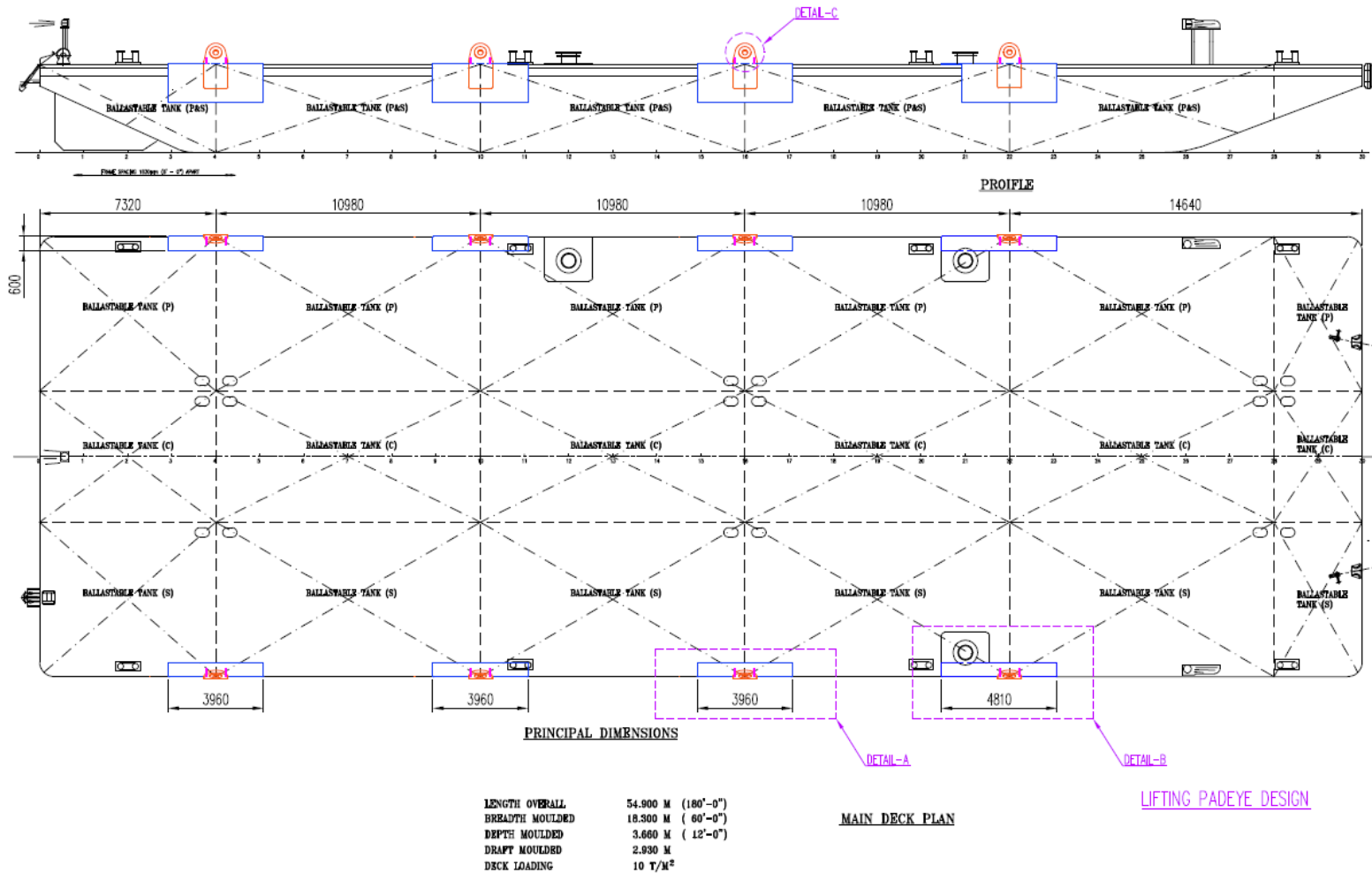


Singapore Marine Logistics Pte Ltd

60 Penjuru Lane, Singapore 609214 | Tel: (65) 6264 1011 Fax: (65) 6264 5567

GENERAL ARRANGEMENT

SMLOG 180



Singapore Marine Logistics Pte Ltd

60 Penjuru Lane, Singapore 609214 | Tel: (65) 6264 1011 Fax: (65) 6264 5567